

WATER PROOFING

ROOF GUARD BLACK

Rubberized Elastomeric Waterproof Liquid Membrane



ARDA Roof Guard Black is cold applied liquid waterproofing membrane specially formulated from a blend of special resin and rubber, reinforced with special water repelling fillers, minerals, stabilizers and gelling agent.

Features

- Unique Additives added to make it

durable.

- Superior wetting & adhesion properties
- Adapts itself over the irregular deck contours.
- Single Component, Cold Applied and Highly Elastic Rubber Like Membrane.

Benefits

- Ensures durable bond & resists peeling, chipping, hence lasts longer.
- Highly Resistance to oxidation, UV & ozone.
- Requires no mixing or heating, saves labour costs.
- Forms a impervious & waterproof blanket.
- Withstands expansion/contraction & deck movements, Resists Crack.

Uses: Ideal for waterproofing Concrete roofs/polyurethane foam slabs/polyester built up roofs/Maintenance of existing roofs, masonry and concrete walls/ Bathrooms/ Basements/ Bridges/Decks/Metal surfaces etc. Popularly used as a sandwich membrane in new construction and as surface treatment on existing slabs.

Packing: 1 kg, 5kg, 20kg, 50 kg, 200kg

ROOF GUARD WHITE

High Quality Elastomeric Waterproof Liquid Membrane



ARDA Roof Guard White is a special acrylic resin based, single part flexible, thixotropic waterproof cum decorative coating. It is economical and ideal for use in vertical/ horizontal surfaces. Suitable for painting external wall as it offers both water proofing and decoration. Can also be used as a

base & intermediate coat in brick bat coba or IPS flooring.

Features

- Adapts itself over the irregular deck contours
- Single part, Thixotropic & Easy to apply
- Seamless, Joint free coating
- Does not contain Lead, Mercury Compound
- Light weight than conventional roofing
- Superior wetting & adhesion properties

Benefits

- Reduces load on the roof thereby increases durability of Structure
- Provides a impervious & waterproof coating
- Ready to use Ideal for external wall coating
- Bonds well to most building material (old or new)
- Non Toxic & Environment friendly.

Uses: Water proofing of plaza car park deck, roof slabs, terraces, balconies, sunshades, parapet walls, etc. Water proofing cum decorating of external plastered walls. Water proofing flashing, roof edgings, gully, steeply pitched designs. Most ideal for use on structures having complex geometry like domes, arches, shells, folded plates, paraboloids, corrugated sheets etc. Suitable for garden, swimming pool, basement when applied as sandwich membrane.

Packing: 1 kg, 5kg, 20kg, 50 Kg, 200kg

ARDA WALL GUARD

Interior & Exterior Elastomeric Coating



ARDA Wall Guard is a special acrylic resin based, single part flexible, thixotropic waterproof cum decorative coating. It is economical and ideal for use in vertical/ horizontal surfaces. Suitable for painting external wall as it offers both water proofing and decoration. Can also be used as a

base & intermediate coat in brick bat coba or IPS flooring.

Features

- Adapts itself over the irregular deck contours
- Single part, Thixotropic & Easy to apply
- Seamless, Joint free coating
- Does not contain Lead, Mercury Compound
- Light weight than conventional roofing
- Superior wetting & adhesion properties

Benefits

- Reduces load on the roof thereby increases durability of Structure
- Provides a impervious & waterproof coating
- Ready to use Ideal for external wall painting
- Bonds well to most building material (old or new)
- Non Toxic & Environment friendly.

Uses: Water proofing of plaza car park deck, roof slabs, terraces, balconies, sunshades, parapet walls, etc. Water proofing cum decorating of external plastered walls. Water proofing flashing, roof edgings, gully, steeply pitched designs. Most ideal for use on structures having complex geometry like domes, arches, shells, folded plates, paraboloids, corrugated sheets etc. Suitable for garden, swimming pool, basement when applied as sandwich membrane.

Packing: 1 kg, 5kg, 20kg, 50 kg, 200kg

ARDA PU-IK

Premium Quality Hybrid Water Base PU Membrane



High Performance, Polyurethane hybrid UV stable, Eco-friendly Flexible, Water-based modified waterproofing membrane based on an advanced polyurethane modified water based Polymer which is a proven solution for Weatherproofing & waterproofing applications for Use in roofing,

basement, retaining walls etc.

Advantages

- Water based for easy clean up in water.
- Flexible Class 3 membrane (35%+Elongation)
- Eco-Friendly low odour for easy use without irritation
- Fast drying can be recoated after 3-5 hours at normal room temperature
- UV stable non yellowing can be used externally
- PU-IK can be used both internally and externally
- Compatible works well with many cement based tile adhesive.
- Excellent crack bridging properties.

Application

Suitable for use on many porous substrates including Gyprock, fibre cement, concrete, render brickwork, render and plasterboard. PU-IK+ can be used to help water/damp proof basements, kitchens, bathrooms, balconies and decks, shower recesses, repair and restoration of leaking roofs as well as a damp proof membrane in sandwich panel construction. It is also suitable for Deck areas & can be used in planter boxes and retaining walls as long as it is protected by drainage or Corflute.

Packing: 1 kg., 5 kg., 10 kg., 20 kg., 20 kg., 50 kg., 200 kg.

WATER PROOFING

ARDA CRETE PRIME⁺

Premium Quality Acrylic Polymers



ARDA Crete Prime+ is a one part Acrylic based polymer along with liquid additives. Finds use as a waterproof membrane for terraces, balconies and roof slabs. It accommodates limited crack movement in underlying surfaces. Bonds excellently to most building materials thus becoming a part

of concrete repair

Uses

- Water proofing of basements, toilet, terraces, roofs, swimming pools, water tanks, bridge decks etc.
- Used in general concrete repairs and in places where high bond strength is required
- Finds use for protection of concrete against corrosion, salt attack

Features

- ARDA Crete Prime+ is a durable Polymer based waterproof coating.
- It effectively protects against concrete decay.
- It is Non-toxic hence environment & user friendly.
- Can be applied fast and with ease.
- Gives excellent adhesion to cementitious substrates.
- Very cost effective & hence economical
- Gives strong bond between old and new concrete

Packing: 1 kg, 5kg, 20kg, 50 Kg, 200kg

ARDA CRETE

High Quality Acrylic Polymers



ARDA Crete is a white liquid Acrylic Polymer blended with plasticisers and selected fillers, for waterproof coating, bonding agent, When diluted it produces a gauging solution for improving cementations mixes. When it is used with combinations with standard quality of ordinary Portland cement, it improves the mechanical

properties such as bonding (adhesion) with various building materials, flexural, compression and impact strength. It improves the thin section fragility of cement when used as coating..

Features

- Polymer in conjunction with cement provides properties to combat the shortcomings of cement – particularly its poor adhesion properties, low impact strength, low flexural strength.
- Combines a tough, hard-wearing surface with waterproofing.
- Allows trapped vapours to escape thus preventing peeling and blister formation
- Can be applied in uniform thickness to horizontal and vertical surfaces
- Develops excellent bond to most building materials
- Reduces or prevents salt penetration into concrete
- Unaffected by ultraviolet light or by chemicals ranging from mild acids to strong alkalis
- No-VOC – therefore can be safely used for green building construction

Usages: Uses with cement to form polymer modified cementitious composite (PMCC). In addition, if used with varying amount of silica/quartz sand produces PMC brush topping, PMC filler and PMC mortar. All the above materials are extensively used for waterproofing and strengthening of existing external surface to prevent ingress of water

Coverage: 2-2.5 m²/kg in two coats

PackSize: 0.5kg, kg, 5kg, 10kg, 20kg, 50kg, 100kg and 200kg HDPE plastic container.

ARDA SBR-30/ SUPER SBR-50

SBR Latex Bonding Agent



ARDA SBR-30/Super SBR-50 Latex based waterproofing & bonding agent formulated as an integral adhesive for slurry bond coats, mortars & concrete to improve bond strength & chemical resistance ideal for producing high abrasion resistant floors, for use in internal & external rendering flooring

screeds and patch repairs. When dry the finished mortars/concrete show a vastly improved resistance to water.

Features

- Imparts improved bond/impact strength
- Increases mortar flexural & tensile strength
- Reduces the permeability of mortar
- Resists deicing salts, mild chemicals, acid & alkali
- Improves mechanical strength of mortar.
- Improves surface hardening

Benefits

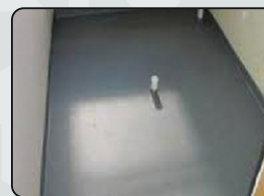
- Reduces cracking, limits wear & ideal for rubber wheeled traffic
- Finds use of waterproof sealing & lining of tanks
- Durable & Prevents concrete decay
- Increases overall structural durability
- Excellent adhesion to most building substrates.

Uses: For general concrete repair & reconstruction work & water proofing. For making repair mortar for mending damaged spots in precast concrete industry. For enabling strong & non permeable joints between old and new concrete when mixed with mortar. For fixing tiles, floor screeds and mosaic tiling. For repairing of cracks & sealing of porous surface and latex modified overlays. Useful where improvements in physical properties of Portland cement systems are required. It's very useful in BATHROOM.

Packing: 1 kg, 5kg, 20kg, 50 Kg, 200kg

ARDACEM-2K

Two Component Cementitious Water Proof Coating



ARDACEM-2K is a two component cementitious & acrylic polymer based flexible waterproofing & protective coating made up from best quality Portland cement, properly selected & graded aggregates, additives & acrylic emulsion polymer as a binder. It is applied to waterproof and protect

concrete and similar structures.

Features

- Flexibility - Provides a flexible & low permeable coating
- Adhesion - Excellent adhesion to concrete, natural and artificial stone.
- Low temperature resistant - Resistance to freeze-thaw cycles and de-icing salts
- Diffusion - Excellent resistance to chloride ion diffusion and carbon dioxide.
- Water permeability - Excellent resistance to ingress of water
- Carbonation - Prevents carbonation of cement concrete

Area of Application : Bathrooms and Toilets, Basements, Channels, Faces of dam walls, Swimming pools, Basins, Storage tanks, Balconies and terraces concrete structures like pillars and beams for road and railway bridges.

Packing: 3 kg, 15kg, 30kg

SEALANT

ARDA SEAL P-100

Polysulphide Sealant, Pour Grade



ARDA Seal P-100 Pour Grade is a two-component Polysulfide Sealant is a chemical resistant elastomeric joint system & also expansion & contraction joint. The Sealant is resistant to many chemicals, shrinkage, aging, thermal stress and the effects of outdoor

exposure. The Sealant is capable of providing efficient performance. The Pour Grade Polysulfide Sealant can be availed in various specification.

Features

- Chemical resistant elastomeric joint system
- Efficient performance
- Various specifications
- Resistant so many chemicals, shrinkage, aging, thermal stress and the effects of outdoor exposure
- Highly resilient with excellent recovery characteristics.
- Provides a uniform, watertight seal.
- Non affected by today's pool chemicals.

Uses: ARDA Seal P-100 is used for caulking and sealing joints subject to movement to provide a firm, flexible, weather-tight seal. It is ideal for sealing joints on swimming pool decks. It is applicable for both interior and exterior use. As well as ore used in Bridge. Highlight Builds.

Packing: 1 kg, 4kg

ARDA SEAL G-100

Polysulphide Sealant, Gun Grade



ARDA Seal G-100 is a two-component, non-sagging, non-flowing, polysulfide-based sealing compound. It is a non-staining sealant that cures to a firm, flexible, tear-resistant rubber. ARDA Seal G-100 is highly resilient and has excellent

recovery characteristics, even after extended periods of compression or elongation. It has outstanding resistance to most chemicals to all weather conditions, aging and shrinkage.

Features

- Non-staining sealant cures to a firm, flexible, tear-resistant rubber
- Highly resilient with excellent recovery characteristics.
- Outstanding resistance to most chemicals, all weather conditions, aging and shrinkage.
- Ideal for short turn-around time applications i.e. pool bottoms, sidewall repairs and high pedestrian and vehicular traffic.
- Used for general purpose caulking, glazing, weatherproofing and curtain wall and joint sealing.
- Supplied in unitized pre-measured packaging (base and setting agent), ready for instant blending.

Uses: ARDA Seal G-100 is a premium quality, flexible sealing compound for use in applications where short turn-around time is a requirement such as pool bottom and sidewall repairs and areas subject to pedestrian and vehicular traffic.

Packing: 1 kg, 4kg

ARDA ACF

Acrylic Based Crack Filler



ARDA ACF Acrylic Crack Filler High Performance Elastomeric Acrylic Crack Filler formulated for filling cracks Best crack filling compound to fill cracks in walls, cracks in plaster, cracks in putty area and cracks in concrete wall plaster. This acrylic crack filling is a thick paste which goes

inside the crack and stops the cause of cracks in plaster. Acrylic Crack Filler is an Acrylic, Co polymer based, White, Thixotropic Paste. Specially formulated for Sealing Static Cracks.

Features

- Formulated with 100% tough, durable, elastomeric acrylic polymers
- Outstanding UV and fuel resistance
- Remains flexible at low temperatures
- Designed for use in all cracks including alligatored areas
- Flexible, with stands temperature variations

Areas of Application: Exterior and interior surfaces Plastered surfaces for filling cracks up to 5mm width.

Method of Application: Clean the substrate to be treated to make it free from any loose particles and oil or grease stains Press the Filler paster into the cracks with a spatula or putty knife. Level the surface

Packing: 500 gm, 1 kg

ARDA SEAL PU-40

Single Component Polyurethan Sealant



ARDA Seal PU-40 is a one-component, medium-modulus polyurethane sealant that cures on exposure to atmospheric humidity. It possesses excellent adhesion to all typical construction materials such as cement based materials, brick, ceramic, glass, wood, galvanized and painted sheet iron

and various plastics.

Application

- PU-40 is used for bonding various construction materials and as a sealing joint.
- Joints around windows
- Skirting boards
- Walls and ceilings
- Door frames
- External and internal crack filling
- Saw cut joints in concrete roads and factory floors

Advantages

- Possesses permanent elasticity
- Paintable
- No sagging-Thixotropic
- Can be applied with hand gun and tooled easily
- No surface tackiness after full cure. Does not pick up dirt
- No shrinkage
- Conforms to the requirements of VOC content specifications in LEED credit EQc4.1 "Low emitting products" of SCAQMD rule 1168

Colour

- White • Grey • Black

Packing: 600ml Sausages

GROUT, HARDNER & ADHESIVE

ARDA TG-100

Cement Based Tile Grout



ARDA TG-100 Cement Based Tile Grout is a high quality fine, polymer-modified, water-resistant, OPC cement, Silica sand and various minerals as well as pigments - based powder grout formulated for grouting glazed wall tiles, mosaics, vitrified & fully vitrified tiles, floor, tiles, industrial

floor tiles etc.

Feature

- Suitable for use on wall and floors
- Low shrinkage - suitable for wide grouting up to 10-12 mm
- Good water resistance - can be used indoors and outdoors
- Excellent workability - easy to spread and smooth
- Available in a variety of colours
- Good anti slump-non-sag properties – easily applied to vertical surfaces.

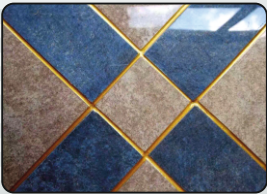
Areas of Application : ARDA TG-100 is formulated to fill tile joints on walls and floors up to a maximum which of 10-12 mm for both interior and exterior applications.

Method of Application : Allow tile adhesive a minimum of 24 hours to cure before grouting. Minimum joint width for walls is 2mm and for floor 3 mm joint surfaces must be firm, clean and free from loose materials and adhesive residue.

Packing: 1 kg

ARDA EG-3K

Three component epoxy tile joint filler



ARDA EG-3K is a three component, epoxide resin-based grout with hygienic, hard-wearing, impervious, a high degree of resistance to chemical attack and abrasion for heavy duty applications. The cured material does not transfer taints to foodstuffs, does not permit the entry of bacteria or dirt

and is easily maintained in a sterile condition.

Area of Application

Restaurants, hotels, kitchens, bathrooms, lobbies, swimming pools, showrooms, shopping malls, multiplexes, laboratories, food & breweries, industries, operating theaters, clinics, production and storage workshops.

Benefits

- Impermeable to liquids and easy to sterilize, clean and maintain
- High bond strength
- Durable and crack resistant and Non powdering
- Water cleanable
- Provides hygienic, hard wearing and impervious properties
- Non toxic & restricts entry of bacteria/ dirt
- Resistance to most common chemicals

Coverage

The coverage mentioned in table is indicative only and can vary as per the tile size, thickness, joint width & wastage during application.

Tile Thickness (mm)	Joint Width (mm)	Coverage (Kg/RM)
3	3	50
3	5	30
5	5	18

ARDA NFH

Non Metallic Floor Hardner



ARDA NFH offered range of Non-Metallic Floor Hardeners is exclusively used for de watering flooring systems. These hardeners are enabled with strong monolithic bond with concrete base which makes them abrasion resistant. With the facilities like nonporous these products also offer

high wear bearing capacity to the floors.

Features

- Offers dense non porous and no slip surface
- Have strong bond with base concrete
- Abrasion resistant
- High wear bearing capacity

Uses : ARDA Non-Metallic Floor Hardener is formulated for use as a surface hardener for concrete floors, which are subject to wear due to abrasion or impact from light to medium traffic. Using proper application procedures it is possible to obtain an easily cleaned surface with good slip resistance. Since the natural aggregates used in ARDA Non-Metallic Floor Hardener are non-metallic it is non-rusting and suitable for both interior and exterior use.

ARDA TA-100

Basic Tile Adhesive



ARDA TA-100 actively engaged in offering a supreme quality Basic Tiles Adhesive. It is use for fixing ceramic and mosaic tile on floor and wall surfaces in domestic & commercial buildings. In accordance with industry set standards, this adhesive is precisely processed from premium quality

chemical compounds and the latest technology. Quality is the main motto of our company hence we assure our clients that this adhesive is best in terms of quality & purity.

Features

- Optimum quality
- Accurate composition
- Eco friendliness
- Precise chemical composition
- High temperature resistance
- Easy to apply

Benefits

- Easy to use
- No wetting of surface to be tiled
- Makes the tiles area waterproof
- Maintains the original lusture of the marbles for years
- Can be used for fixing tile over tile
- MTA is specially developed for fixing marbles and glass mosaic tiles.

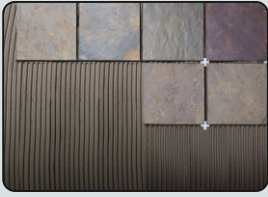
Uses: ARDA TA-100 is mainly used for fixing glazed, ceramic, terracotta tiles and vitreous tiles to the walls or floors on smooth plastered or concrete surfaces. ARDA is also used for fixing tiles or stone cladding on exterior walls and tiles in swimming pools and for fixing of marble tiles on any cementitious surfaces.

Packing: 20kg, Bag

ADHESIVE

ARDA TT-200

Tile on Tile Adhesive



ARDA TT-200 Tile Adhesive for Tile-on-Tile Application is a single component cement based polymer modified adhesives for fixing tiles over tiles on floors and walls in interiors and exteriors. The product contains special additives that provide excellent bonding & grabbing properties.

Features

- High Bond Strength
- Non Shrinkage Cracks
- High Thermal Insulation
- Economical & Time Saving
- Zero Wastage
- Premixed

Benefits

- Can be used in a convenient way
- Holds tiles against the floor with utmost level of strength
- Tiles can be installed within a short period of time
- Can be used for laying different types of tiles
- Tiles can be laid on the floor in an economical way

Uses: It's very easy to use tile adhesive. It will be already ready to use after just mixing with water. Bagging product makes it convenient for transportation process, providing low dust and clean working space. Tiles are not needed to be soaked, just un-box them and lay.

Packing: 20kg

ARDA SA-300

Stone Adhesive



ARDA SA-300 manufacture a quality range of Stone Adhesive which is fabricated with high grade quality raw materials. These are offered in different sizes and patterns. Our offered range of this product will most extensively used for the smooth stone surface. Our products are highly

appreciated by our customers for their best quality. Our range is available at market leading prices.

Features

- Excellent adhesion and low shrinkage
- Ready to use. Needs to be mixed with water
- Suitable for internal heavy stone and tile cladding
- Accommodates physical and thermal movements
- Reduces the time required to perform at site and also the labour requirement
- Easier for the material planning team and facilitating on time completion of work at site
- Product performance leading to minimum shrinkage cracks solving a major problem in comparison to the conventional method.

Uses: Ensure that the surface of the stone or slab to be fixed to the wall is clean and free from dust, dirt, grease etc. Make sure that the surface is absolutely dry. ARDA Adhesive is a two-component product consisting of Base and Reactor.

Packing: 20kg

ARDA BA-500

AAC Block Adhesive



ARDA BA-500 is a factory prepared blend of carefully selected raw materials, Portland cement and graded aggregates and polymers. Formulated for use with water to produce high strength thixotropic mortar, for laying aerated light weight concrete, fly ash

bricks, cement hollow blocks, cellular concrete blocks or smoothing over the block work surface in layers of up to 12mm thickness that meet and exceed the requirements of National and International Standards.

Features

- High Bond Strength
- No Shrinkage Cracks
- High Thermal Insulation
- Zero Wastage
- No Curing Required
- High Coverage

Benefits

- Long working time
- No curing required after block work is done
- Improved adhesion between two blocks
- Fast & economical

Area of Application: For interior and exterior use for preparing thin bed block mortar for ALC and cellular concrete blocks.

Uses: The surfaces on which the block work has to be done shall be sound and conforms to good design, rigid, clean and free of dirt, oil, grease, curing compounds from release agents or loose plaster and paint For economy the surfaces should be level and true within.

ARDA T-KLIN

Heavy Duty Tile and Machinery Cleaner



ARDA T-KLIN is a special liquid, inhibited, water based, pre-soaked alkaline cleaner for frictionless cleaning system. T-KLIN is specially formulated to clean effectively Tile surfaces. T-KLIN is also used for many other industrial cleaning like spot remover etc.

Application

Cleaning of concrete surfaces, ceramic tiles, vitrified tiles, Granites, Toilet bowls, Ceramic sinks and wash basin

Advantages

- Multipurpose cleaning agent.
- Its quick action make loosens and helps to remove oil, grease firm and grime.
- Keeps surfaces intact.
- Fast acting formula.
- T-KLIN is also used for many other industrial cleaning like spot remover, and all purpose pressure washing detergent etc.

Packing : 1 kg., 5 kg., 10 kg., 20 kg., 50 kg., 200 kg.

CONCRETE ADMIXTURE

ARDA ALW-100 / ALW-200

Concrete Admixture & Plasticizer



These are integral Liquid Waterproofing & Admixture for concrete and cement mortar. It has good plasticizing properties, makes concrete cohesive and prevents segregation. The liquid is to be added to the wet concrete or mortar. The

product conforms to IS:2645-1975 as an integral waterproofing admixture. It fills up the capillaries in the concrete and makes it waterproof. Also used to expedite the setting time of freshly mixed concrete.

Features

- Being liquid easily flowable
- Fills the capillaries in concrete
- Exhibits Consistent Plasticity & Air entrainment
- Required in small dosage & Compatible to all types of sand and cement

Benefits

- Improves workability of concrete and helps to achieve compaction
- Ensures instant dispersion & homogeneous mixing
- Reduces porosity/permeability of mortar & arrests leakage
- Easy to handle and works effectively across a variable mixing efficiency and time.

Packing: 1 kg, 5kg, 20kg, 50 Kg, 200kg

ARDA NS-200/ NS-400

Neptha Base Concrete Admixture



ARDA NS 200 and NS 400 is an high end water reducing & set retarding liquid Super Plasticizing admixture for concrete and cement mortar. Approximate dosage is 1%-1.2% by the weight of cement. For M10 to 40grades. Higher dosages are

recommended for certain combinations of materials and conditions & when water reduction in excess of 16% to 20% is required.

Benefits

- Suitable for use with all types of sand and cement normally employed in mortar manufacture.
- Improves workability & compaction
- Reduces water content there by enables preparation of high grade concrete with the same composition.
- Provides surface finish free from sand runs or blemishes
- Makes the concrete more durable and permeable.

Area of Application : Production of high strength/high work ability concrete. Hot weather concrete. Production of ready mix concrete.

Uses : ARDA NS is formulated for use by commercial ready mix operators, who can benefit from its multiple role characteristics by minimizing admixture stock.

ARDA PCL, PCM & PCH

Liquid PC Based Concrete Admixture



ARDA PCL, PCM & PCH is an high end water reducing & set retarding liquid Super plasticizing admixture for concrete and cement mortar Approximate dosage in 0.95%-1.1% by the weight of cement. For M40 to M70 grades. Higher dosages are

recommended for certain combinations of materials and conditions & when water reduction in excess of 20% to 25% is required. We have also make Self compacting Concrete for High Slumps 800mm to 600mm.

Benefits:

- Suitable for use with all types of sand and cement normally employed in mortar manufacture.
- Improves workability & compaction
- Reduces water content thereby enables preparation of high grade concrete with the same composition
- Provides surface finish free from sand runs or blemishes
- Makes the concrete more durable and permeable.

Area of Application : Production of high strength/high work ability concrete, Production of ready mix concrete.

Uses : ARDA NSP is formulated for use by commercial ready mix operators, who can benefit from its multiple role characteristics by minimizing admixture stock.

ARDA PBH

Paver Block Accelerator



ARDA Paver Block Accelerator is use in rubber mold paver block for the decrease the period of setting of mold and add mixture of concrete mix. The extensive range of Rubber Mold Paver Block & Tiles, we manufacture are highly appreciated among our clients

for their customized option. These products are extensively used for the transportation of liquids and gas for easy consumption.

Features

- Increases the rate of strength development.
- Accelerates the hardening of floors and screeds.
- Accelerates the setting time of concrete.
- Resistant to freezing in cold weather concreting
- Increases density
- Do not use in concrete reinforcement, etc. steel

Dosage & Packing: 200 ml per 50kg of cement. For 60mm, 100mm block rubber mould only 50, 100, 200 Litter Carboys.

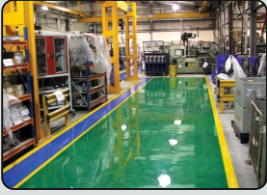
Uses: ARDA PBH should be directly added to the mix preferably with the mixing water. The optimum dosage rate should be determined by site trials. The dosage rate is 300 grams per 50kg of cement.

Packing: 1 kg, 5kg, 20kg, 50 Kg, 200kg

OTHER PRODUCTS

ARDA EFL

Smooth Self Levelling Epoxy Floor Topping



It is a solvent free, high performance three components pigmented self levelling product composed of epoxy resin, hardener and fillers pack is a specially selected product for new and old concrete floor to provide hard wearing, chemical resistant,

impervious and easy to clean seamless floor topping, it has enough flexibility to Withstand impact while industrial traffic

APPLICATION

Priming

The prepared surface shall be primed with star epoxy primer before applying the self levelling product. Where the substrate is observed to be porous, it shall be primed again and puddling of the primer shall be avoided. The primer shall be allowed to dry before laying epoxy topping. It shall not be delayed more than 24 hours after priming the substrate.

Mixing:

It comprises of three components as base resin, hardener and filler. The hardener shall be poured into the base resin in the mixing vessel and shall be mixed thoroughly for 1-2 minutes using heavy duty slow speed paddle mixer. Filler part shall then be added slowly and mixed for 3-5 minutes to achieve a uniform consistency. The areas to be laid shall be marked for every one to two packs to achieve a uniform thickness as recommended. For large areas, planning of laying sequences is essential. The technical department of ARDA can be contacted for more information.

Laying:

Continuous placement of an adequate quantity of material is necessary to provide the most uniform and level surface. Start in one corner and place a continuous stream of material along one edge of the area and back up the first placement strip as soon as possible to achieve uniform level surface. A serrated trowel shall be used to spread the material evenly to achieve the required thickness. Wait few minutes and then use a spike roller to back roll the material to disperse any entrapped air and to further level the material. Light rolling may then be required if air release is still apparent in the surface. The rolling can be continued until the roller marks take two minutes to disappear.

Advantages

- Provides high level filling in a single application.
- Excellent resistance to chemical spills.
- Bonds tenaciously to become an integral part of the floor.
- Excellent abrasion and intense transit resistance.
- Non-tainting. Suitable for food processing areas & it is food grade products.
- Longer pot life suited for tropical climate.
- Available in wide range of colors.
- Smooth impervious seamless floor and easy to clean surface.
- Solvent free formulation ensures low odor application.
- Flowable consistency for self levelling application and easy to maintain.

Note- The finished flooring shall be allowed to cure for 20-48 hours before bare roof traffic is allowed on it. Full vehicle traffic can be allowed of the full curing up 5-7 days.

Packing : 16 Kg

ARDA EPC-FG

High Build Solvent Free Epoxy Flooring System & Potable Water Tank Coating



ARDA EPC-FG is a two component, solvent-free, epoxy resin self smoothing chemical resistant flooring system. It has excellent adhesion qualities, chemical resistant and glossy finish and easily cleaned.

Application

ARDA EPC-FG is formulated for use in wide range of industrial environments where a lasting solution to floor maintenance problems is required. It provides a dense, impervious, coloured and chemically resistant floor surface which is hygienic and easy to clean. Typical applications include:

Heavy duty concrete floor coating in industrial and commercial plants such as warehouses, service stations, chemical plants, metal treatment plants, internal car parking decks.

- Machinery service areas
- Rust preventing coating for steel and concrete tanks.
- Coating on steel exposed to abrasion
- Coating inside portable water tanks & water retaining structures.
- Hygienic Industries like Pharma, Biotech etc.

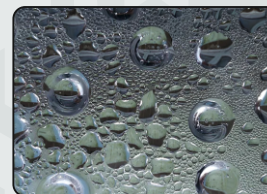
Advantages:

- Excellent wear under heavy traffic
- High flow characteristics combined with an attractive self smoothing finish.
- Fast application – minimized downtime.
- Chemically resistant- good resistance to a wide range of chemicals.
- Durable and good impact resistance.
- Hygienic- provides a dense, impervious, seamless floor surface which is easily cleaned.
- Attractive- available in a wide range of colours to enhance the working environment. Solvent free, low odour and safe application.
- Food Grade Product

Packing : 6 Kg.

ARDA CLEAR COAT

Lamination Coat



ARDA Lamination coatings can be considered aesthetically equivalent to bicomponent acrylic and polyurethane solvent based coatings. The range is composed of both pigmented and transparent products. In this latter case, the main characteristic is the ability to achieve almost and color

without limitation to the shade, with excellent coverage and light stability, thereby overcoming the typical limits of polyester or acrylic UV coatings.

Features

- Transparent protective coating on acrylic base for thoroughly dried paintings.
- Quick-drying, light-proof, no yellowing good adherence, wiping-proof and weather resistant
- Applicable on wood, cardboard, stone, ceramics and many surfaces.

Benefits

- More Durable
- Faster Cure Times
- Less VOC
- Non-Flammable
- Faster Dry Times
- Less Yellowing

Packing: 1 kg, 5kg, 20kg, 50 Kg, 200kg

ARDA COATING PRODUCTS

PRODUCT NAME	DESCRIPTION
ROOF GUARD BLACK	Rubberized Elastomeric Waterproof Membrane
ROOF GUARD WHITE	High Quality Waterproof Membrane
WALL GUARD	Interior & Exterior Elastomeric Coating
PU-1K	Premium Quality Hybrid, Water-based PU membrane
ARDA CEM-2K	Two Pack cementitious Waterproof Coating
ARDA CRETE	Acrylic Polymer Water Proofing

Product	Dilution Ratio with Water		Coverage/kg for 2 coats	Dry Film Thickness in microns
	Primer	1" & 2" coat		
ROOF GUARD BLACK	1:2	Upto 20% for 1st Coat Upto 10% for 2nd Coat	22-25 sq.ft. (Metals) 16-22 sq.ft. (Asbestos) 18-22 sq.ft. (Concrete)	300-400 μ in 2 coats. Apply @ 1 kg/m ² to achieve >500 μ
ROOF GUARD WHITE	1:2	Upto 20% for 1st Coat Upto 10% for 2nd Coat	18-20 sq.ft.	2 coats will give 350 to 400 μ
WALL GUARD	1:2	Undiluted (if reqd. Dilute 5-10%)	25-30 sq.ft.	2 coats will give 150 to 200 μ
PU-1K	20% Water Dilution	No Dilution	12-15 sq.ft.	2 Coats will give 1000 μ
ARDA CEM-2K	N/A	No Dilution	5-6 sq.ft.	2 Coats will give 1.8mm
ARDA CRETE	1:1:2	Mixing Ratio Material Water: Cement 1:2	18-22 sq.ft.	2 Coats will give 1mm

PRODUCT NAME	DESCRIPTION
ARDA CRETE	High Quality Acrylic Polymer
ARDA CRETE PRIME+	Premium Quality Acrylic Polymer
ARDA SBR-30/SUPER SBR-50	SBR Latex Bonding Agent

METHOD OF APPLICATION

As a waterproof coating	Mix material Water @ 1:1 & add cement to the mixed liquid as per ration 1:1:4	Mix material Water @ 1:1 & add cement to the mixed liquid as per ration 1:1:4
Repairing mortar	Mix material- Cement: washed sand in ratio of 2:5:15	Dry mix cement and sand first and then add chemical Mix for 3 minute. Add water as required to attain requisite consistency of mortar.
For use as a waterproof repair plaster	Mix 1 kg of material with requisite water for 50 kg. of cement.	Add mixture to the recommended dry plaster mix of 1:3 mortar (cement-sand) and apply 1st layer. Keep water- cement ratio in plaster as low as 0.4 but <0.45. Lay the 2nd and top layer of plaster without any addition.
For use as a Crack Repair	Mix 1 kg. of material with 4 kg. cement	Ideal for plaster cracks >5mm & in gaps developed between masonry & RCC members. Clean the cracks devoid of loose materials & wet it. Apply a bond coat. Then follow as per above. Fill & compact mixture into the crack fully and trowel finish to level.